

Inclusion Newsletter: Autumn Term 2024

KS4 Outcomes

During the summer holidays, students in Year 11 returned to Gildredge House to collect their Examination results. This can be a very anxious time for students, as they are gearing up to move on to the next stage of their educational/career-based journey.

It was great to see such happy faces on the day, with our students achieving some significantly impressive results. Our SEND cohort (K coded) and multilingual students both achieved a Progress 8 score of +0.15, which indicates that on average these students made positive progress beyond their expected levels.

Summer Camp

Approximately 100 students entering our Year 7 cohort attended this year's Summer Camp. The focus of the week was to help welcome and prepare them for school, with activities that focussed on meeting their new peers and teachers, getting to know the layout of the school, answering questions they may have and making them feel more comfortable in the school building, providing a flavour of what lessons may look or feel like.



The students participated in activities that included:

- School Tours
- Icebreaker activities
- A coached lacrosse session
- Designing an 'ASPIRE' T-shirt
- The Pirate numeracy and coordinates game
- A bridge building challenge (STEM)
- Dodgeball
- A reading comprehension challenge
- Preparing for Year 7 tasks
- Making tea for aliens (writing a scientific plan)
- Mini Olympics
- Making friendship bracelets

Overall, the Camp was a real success and feedback from students was incredibly positive.

Transition

To support students that may require additional time to process the change from Primary to Secondary school, or for those students that need support returning to school from a long summer break, both Primary and Secondary SEND teams provided support to make these transitions as smooth as possible.

Our Primary and Secondary students that have historically, or will potentially find transition a challenge, were also invited into the school prior to the commencement of the new academic year. This was an opportunity for them to re-acclimatise to the school and their new classroom.

Forest School



In the Summer term last academic year we began a Forest School Programme, delivered by a qualified Forest School Leader and our Nurture Lead, Mrs Boothroyd.

Forest School is a student-centred inspirational learning process that supports play, exploration and supported risk taking within a nature-based environment.

This term, a group from Years 5&6 and an additional group from Years 7&8 have been involved in the programme.



It has been great to see these students develop their ability to work both independently and as a team, as well as improving their self-confidence, creativity and resilience.

We look forward to continuing the program in the Spring term.

The Scholars Programme



A group of our Year 10 students are in the process of completing The Scholars Programme, a course ran through The Brilliant Club who we have been working with for a number of years.

The Scholars Programme is a national university access programme, where students are encouraged to think and work independently across seven tutorials with a subject expert PhD researcher.

During the programme for Year 10, their topic focus was "Social Science: How can we make the UK a more equal place?" To complete the programme, students will be required to write a 1500-word essay and receive a university-level grading from their PhD tutor.

Once a grade has been awarded, students will be attending a graduation event in February at Goldsmiths University, where they will receive their certificates and be provided with a tour of the university and will listen to guest speakers on the day.

We look forward to reporting on the outcome of this terms Scholars Programme, as well as reporting on future groups across the year.

Parent Partnerships

Multilingual Students (EAL)



To further develop the relationship between Gildredge House and our parents/carers of multilingual students (EAL), we held our first Multilingual Parent/Carer Coffee Morning for our Reception to Year 3 parents/carers.

The rationale for having this Coffee Morning for was to provide parents/carers with the information and support they may need, allow them time to meet with other multilingual parents/carers and finally to provide opportunities to give feedback relating to how we can provide further support.

Members of staff from the English as an Additional Language Service (EALS), who have been working with the school to support students identified as new to English or being in the early acquisition stages, attended the event and provided parents/carers with information around supporting their children at home.

We look forward to holding our next Multilingual Parent/Carer Coffee Morning in the New Year with parents/carers of all year groups.

SEND



We had our second SEND Coffee Morning for Primary and Secondary parents/carers.

In Primary, Mr Stephens delivered a session relating to the County picture of support and the Graduated Approach, that schools take to evidence support that is put in place, above and beyond standard classroom adaptations, to support those children that require it.

In Secondary, the focus was around working memory and supporting students with strategies to help improve this. We were delighted to have an Education Psychologist deliver a presentation relating to the concept of working memory, alongside our Secondary SENDCO, Mrs O'Driscoll, who provided practical examples of how to support students with this when revising for assessments and examinations.

More information to follow regarding the Spring Term SEND Parent Partnership events.

Interventions

In Primary we provided class-based interventions to support academic attainment. We also provided a range of Social, Emotional, Mental Health based interventions. These were delivered by our Nurture Lead and Primary Pastoral Co-Ordinator. The interventions include Nurture sessions (one to two shorter nurture sessions a week), Restore (longer nurture sessions), ELSA (Emotional Literacy Support Assistant) and 1:1 pastoral sessions.

In Secondary, we continue to provide a variety of tutor-time interventions for those students that have been identified, through diagnostics assessment, as requiring additional support. The focus of these sessions is to help students to “catch up and keep up” with age-related expectations relating to whichever area the intervention involves.

We ensure these interventions are intensive and time-bound, with the students returning to tutor time or classroom lessons once they have evidenced that progress has been made.

The appointment of our Literacy Intervention Specialist, working with students from Year 5 to Year 11, has allowed us to provide increased support for students to develop their literacy skills, such as reading comprehension and writing.

Our Monday morning breakfast numeracy interventions have continued for our Year 7 and 9 students this academic year also, something that has been well attended throughout.

Exam Access Arrangements

Our Year 10 and 11 students identified as potentially requiring adjustments to support them within examinations received access arrangements testing in the Autumn term, to identify whether they may or may not require exam concessions in their exams.

The results from the testing will evidence whether a student needs extra time, the use of a laptop or scribe and readers. This process will continue in the Spring term.

Black History Month



During Black History Month in October, a group of our students delivered assemblies to students from Year 7 to 11.

These assemblies referred to culture, sharing information with students about their own heritage and how they came to become a student at Gildredge House and offered support to students in relation to reporting any concerns they may have.

The assemblies were extremely powerful, and we were so proud of the mature approach taken by both those delivering the assemblies and those listening.

Adaptive Teaching CPD (HOD/MST)

This term our Special Educational Needs Coordinators in Primary (Mr Stephens) and Secondary (Mrs O’Driscoll), have been delivering training to teaching staff around adaptive teaching.

The focus has been on strategies to support students in each of the respective phases, implementing strategies from our Empowering Every Learner framework and within Student Support Profiles.

ELSA

Following the training our Primary and Secondary pastoral leads completed last academic year, we were able to begin ELSA (Emotional Literacy Support Assistant) support sessions with students that may require emotional support with the following:



- Loss and bereavement
- Social Skills
- Managing strong feelings
- Conflict
- Problem solving
- Emotional Literacy
- Friendship issues
- Anxiety and worries
- Emotional Regulation
- Social and therapeutic stories
- Self-esteem
- Relationships
- Bullying
- Growth Mindset

ELSA is designed to be a short-term intervention across 6-12 weeks, helping students to achieve manageable targets. An ELSA is not there to fix problems but to support students and help them find their own solutions.

Language Assessments in Primary (MST)

Language Assessments have taken place in Primary over the course of the first full term. These are conducted to assess students' language understanding skills, which underpin all the other skills that they will use within their learning.

This information is then used to support classroom teachers with appropriate adaptations and/or interventions they can implement to support.

Young Carers



At Gildredge House we are fully committed to ensuring that our young carers can attend school and be afforded the same opportunities for success as other students who do not have these responsibilities. We take a collaborative approach to this support, working with our young carers and their families regarding their caring circumstances and the support associated.

Our Young Carers Student Champion, Oliver D, has been an integral part of driving this support for these students at Gildredge House and within the wider community.



Oliver is a member of the Youth Shadow Board and attended Young Carer National Voice meetings, to share his experience as a Young Carer. He also spoke at the Carers Trust Conference and has arranged to meet Josh Babarinde MP, to raise awareness of Young Carers in Education.

Finally, Oliver won the BBC Make a Difference award for his role as a Young Carer. Huge congratulations to Oliver and we look forward to working with him on raising awareness for our Young Carers at Gildredge House and within the local area.

Why Go to University? University of Sussex



In November, students from Gildredge House attended a 'Why go to University' event, run by University of Sussex. Students had opportunities to explore a range of subjects that they would not necessarily encounter at school.

Students studying degrees such as International Relations, Economics and The Sociology of Education offered interactive sessions with all the students, giving them a realistic understanding of what studying these subjects at university might look like.

One student said, "I managed to stop a world war by offering my country's troops to an emerging country." Another student said, "I've always enjoyed biology, but being involved in the microbiology workshop made me realise that going to university to study this subject is now a reality for me."

This was a fantastic event and Gildredge House are working hard to bring this event to the school, to encourage many more students to consider Higher Education.

For more information on the University of Sussex's widening participation to university, visit [Improving access to higher education : About us : University of Sussex](#)

Annual National Space Centre Conference 2024 - Herstmonceux

In October, students attended the National Space Centre's annual conference. Students talked to eminent scientists, including Professor Sanjeev Gupta (Prof. Earth Sciences at Imperial College, London), who shared how he is leading research of all the rocks extracted from Mars. He explained how the Perseverance Rover extracts samples, and he spoke about how he, his team and NASA are planning to bring them back to Earth for full examination.



The students also met Dr Christine Brockley from UCL, a female Aeronautical Engineer, who told them how she worked her way through an apprenticeship to become a Project Manager responsible for building the Herschel Space Telescope. She talked about roles for women in aeronautical engineering and has offered to come and talk to our students again.

For more information on Prof Gupta and Ms Brockley, please visit Imperial College [Professor Sanjeev Gupta](#) and the Institute of Mechanical Engineers [Meet the Mechanical Engineer: Chris Brockley-Blatt, shooting for the stars](#)

Brand New Year 10 Debating Club



Year 10 students participated in a 'How to Debate' workshop hosted by Sesh Govender from Eastbourne College. Sesh brought along two students, one of them a former Gildredge House student who gained a scholarship to attend the college when she left at the end of Year 11.

Sesh taught students the format of a British Parliamentary Debate and the students got stuck into debating against one another immediately. The theme was 'Should Christmas be banned?' Students created fantastic arguments for and against this motion and it is clear we have some very talented debaters in our school. Gildredge House will be competing against other

Eastbourne Secondary Schools on a termly basis and we will be hosting the first inter school debate in January 2025.

If you would like to join our debating club next term, please email Mrs Sara Bray s.bray@gildredgehouse.org.uk

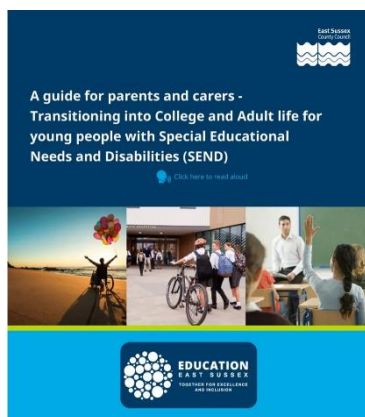
If you would like to find out more about British Parliamentary Debating visit [The Ultimate Guide to British Parliamentary Debate: Rules, Format, and Tips](#)

Gildredge House Careers Fair



Gildredge Houses' annual Careers Fair was held this term and our exhibitors reported great engagement and enthusiasm from our students. Exhibitors stayed behind for a special session to offer our SEND students a quieter space to ask their questions and have a look around.

I-Can Careers Fair for students 2 March 2025



The I-Can Careers Fair will return for SEND students in March to celebrate National Careers Week. Gildredge House will be supporting our Year 9 SEND students by taking them to the Kings Centre and supporting them to work with colleges and employers.

Calling all parents and carers of young people with SEND

If you are supporting a young person with additional needs, we recommend you read the parent and carer transitioning into college document [here](#) and have a browse through Year 9, 10 and Year 11 roadmaps, outlining the ways you can support your child with their next steps.

You will find out more about post-16 levels of education and what to expect in these settings. This invaluable guide is a must read.

Family Hub East Sussex

Please click the link below, which will take you to the website for Family Hub East Sussex, a one-stop-shop for families to access activities or receive support in their local community.

[Family hubs](#) | [Family hubs](#)

