

GH CAREERS

CAREERS UPDATES



**THIS WEEK'S
HIGHLIGHTS**

CAREERS UPDATES

For more Careers advice please check out the website. Available [here](#).

Essential Skills



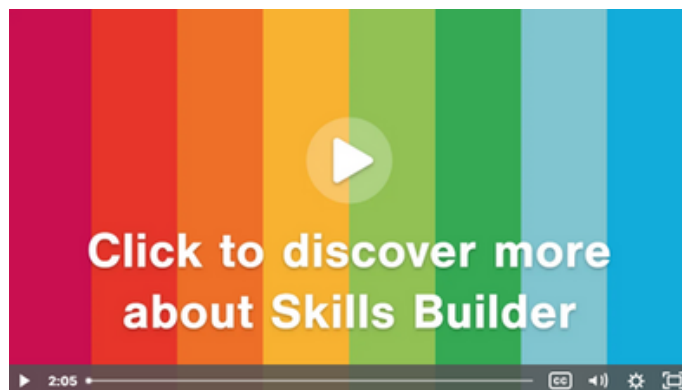
Going for Gold with SkillsBuilder

Gildredge House is a SkillsBuilder School. SkillsBuilder aims to create a universal language to support students to develop their employability skills. We are currently embedding SkillsBuilder into our curriculum and we've already started using the Framework for the Year 10 work experience programme as well as the Year 9 Take Your Child to Work Day. Even students in Key Stage 2 will begin to understand the SkillsBuilder language.

If you are interested in supporting your child to improve their employability skills, why not look at the Framework. Perhaps you can pitch your own employability skills against the Framework too.

[The Skills Builder Partnership](#)

Watch this brief 2 minute video to discover more [The Skills Builder Partnership](#)



SkillsBuilder Weekly Challenge

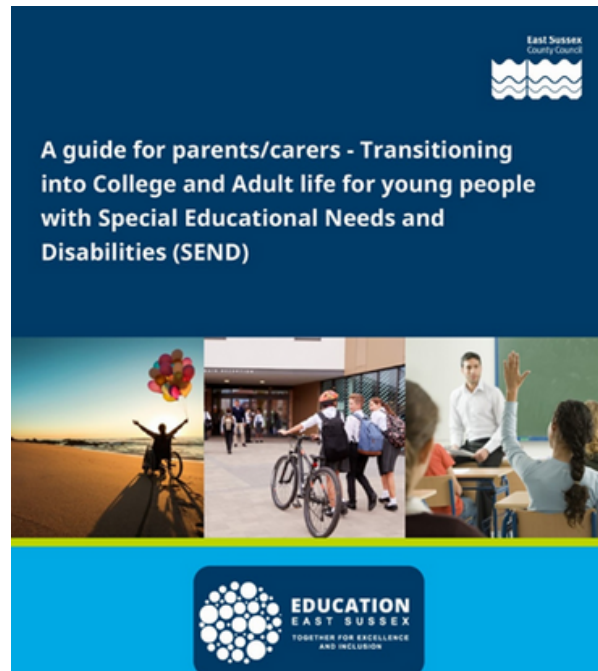
If you have time, why not try out a quick SkillsBuilder Challenge by visiting the Skills Builder Homezone or scan the QR code below. This week's challenge is around one of the eight skills 'Speaking'



CAREERS UPDATES

For more Careers advice please check out the website. Available [here](#).

Guide for Parents with young people with Special Educational Needs and Disabilities (SEND) moving on to Post-16 studies



[CLICK HERE](#)

Moving on after secondary school can be a daunting prospect for all students, but more so if a student has SEND. Questions such as: Will my college understand my needs? Will the college have a course that it right for me? Will I be able to continue progressing? Will I get the support I need? These are just a few questions that students may have. If you are a parent of a student who has SEND, then this guide is a very helpful booklet to support you to support your child with their transition.

Gildredge House supports all students with their Post-16 applications and additional support is given to students who have SEND, have English as an additional language (EAL) or have challenges at home. Bespoke sessions which include one to one careers advice and support are available to help all our students with their transition. If you have concerns about your child's transition. If you have concerns about your child's transition that you would like to discuss, please email the Careers Department s.bray@gildredgehouse.org.uk



GILDREDGE HOUSE



@GILDREDGEHOUSE
FREESCHOOL



WWW.GILDREDGEHOUSE.ORG.UK

Medic Mentor NHS Virtual Work Experience



If you are aged 14 and over and are interested in a career in medicine or dentistry, then read on.

Many of you have signed up for Medic Mentor's virtual work experience and Medic Mentors have noted that students at Gildredge House are taking a keen interest in joining the NHS Virtual Work Experience Programme. If you missed the opportunity to join, it's not too late to get started. Dr Siva wrote to us and told us that this work experience is recognised by the Medical and Dental Schools Council as a valuable alternative to traditional, in-person shadowing.

For further information visit <https://medicmentor.org/university-hospitals-birmingham-trust-virtual-work-experience/>



How do you qualify as an accountant?

You can become a chartered accountant by taking a degree, followed by professional qualifications. Or you can work towards a degree apprenticeship as an accountancy or taxation professional.

Let's bust a few myths about accountancy:

- You don't need to be accomplished in all areas of maths to be a great accountant, but it does help to be good with numbers.
- You don't need a degree, although many people follow the academic route to qualification.
- If you choose the degree route, you needn't study accounting, maths or economics. Languages or sciences could be just as useful.

Possible routes include:

- Academic: A levels (or equivalent) plus degree plus professional qualifications
- Vocational: BTEC level 3 (or similar qualifications) plus degree plus professional qualifications
- Work-based: apprenticeship (starting at advanced, higher or degree level, including professional qualifications)
- Work-based: start off in a junior role, and work towards professional qualifications alongside work

Different professional qualifications are required depending on the type of accountancy you choose to specialise in.



Are you interested in studying to become a dentist, a vet, or a doctor and want to study abroad?

Medical Doorway's Open Day is the UK's only dedicated education fair for students looking to study medicine, dentistry or veterinary medicine in the UK or abroad. This event gives you the chance to meet prestigious medical faculties and question them directly about any aspect of applying, enrolling and studying for your future career as a doctor, dentist or vet. This event gives you the chance to meet current medical students studying at various European medical schools as well as a variety of world-ranked medical faculties.

Join the Royal Society of Medicine At The Medical Doorway Careers Fair:

Saturday 25th November 2023
Royal Society of Medicine in London
From 10:30 am

- FREE to attend
- Meet universities from a range of countries

Find out from existing students about the reality of studying abroad





CAREERS UPDATES

For more Careers advice please check out the website. Available [here](#).



Applications for the free National NHS Virtual Work experience programme have now opened for 2023-2024! This programme has supported over 30,000 secondary school students obtain free work experiences last year. Virtual work experiences have been accepted by the Medical Schools and Dental Schools Council as valuable alternatives to in-person shadowing, backed by the Health Education England Discovery report on the impact of virtual work placements. This programme is brought to you by Birmingham Universities Hospitals Trust in collaboration with Medic Mentor and is completely free. Not only is this a reliable alternative to in-person shadowing but it also plays a significant role in preparing students for their in-person work placements with structured teaching and opportunities to speak directly with healthcare professionals. The opportunity is open to any student across the UK from 14 years old and above.

Students can apply for a placement, for free at this link:
<https://medicmentor.org/university-hospitals-birmingham-trust-virtual-work-experience/>





Taking part in the Virtual Work Experience will provide:

Comprehensive Insights: The programme covers a range of specialities, providing a holistic understanding of medical and dental practices. Each month, a new focus area is introduced, allowing participants to delve into different aspects of the field.

Flexible Participation: Tailored for students from years 10–13/S3–S6/NI10–14, the programme accommodates various schedules by being virtual. Participants have one month to complete each speciality, ensuring flexibility and ease of participation.

Recognised Certification: Upon successful completion of all specialities, students will receive a certificate from Medic Mentor and UHB, validating their active participation to include in their UCAS and apprenticeship applications.

This month's focus is on Surgery or Oral Surgery, offering a firsthand look into the life of a surgeon and the intricacies of procedures such as keyhole surgery in medicine or paediatric dentistry and oral surgery for those interested in dentistry.

Registering for these programmes is simple—students just need to complete the free online application form:

<https://airtable.com/appuQX2ouadvjQUSU/shrroljLczgdg9uLw>

Calling all Young Professionals in Year 11 and Year 13



Young Professionals have told us about four more incredible opportunities lined up for students that you may want to join virtually. Each link below will take you to a separate application form along with all the information you need on each of the events.

Join the RAF Engineering team



RAF Engineering Insight Event

- Tuesday 5th December 2023, 5.00 pm – 6.30 pm
- Open to all students in Y11 and Y13
- Targeted to students looking to get into Engineering and STEM.
- Application link <https://www.surveymonkey.co.uk/r/RAFVirtualEngineering>

Would you like to be an engineer or working in Business and Technology on transport ?



Insight into TFL (Transport for London) Virtual Event

- Tuesday 28th November 5.00pm – 6.30pm
- Open to all students in Y11, Y12 Y13 & Y14 – NI (S4, S5 & S6 – Scotland)
- Targeted to students looking to get into Engineering, Business and Technology

Application link à <https://www.surveymonkey.co.uk/r/InsightIntoTFL>





CAREERS UPDATES

For more Careers advice please check out the website. Available [here](#).

Want to Work In Banking?



An insight to Lloyds Banking Group

- Tuesday 5th December 2023, 5.00pm – 6.00pm
- Open to all students in Y11, Y13

· Targeted to students looking to get into Business, Finance, Accounting, Data Analytics, Technology, Risk and HR

Application link à

<https://www.surveymonkey.co.uk/r/LloydsBankingGroupCareersLive>
d a subheading

Thinking of a Career in Accounting?



AICPA CIMA Virtual Insight Event

- Wednesday 29th November 2023, 5.00pm – 6.30pm
- Open to all students Y11, Y13

· Targeted to students looking to get into Accounting, Finance & Investment Management and Business

Application link ☒

<https://www.surveymonkey.co.uk/r/AICPACIMAVirtualEvent>





CAREERS UPDATES

For more Careers advice please check out the website. Available [here](#).



I-Can Careers Fair for Students with SEND **Tuesday 28 November 2023 4:30pm – 7:00pm**

A reminder that if your child has an educational health care plan or has SEND, then please consider visiting the I-Can Careers Fair for parents and carers.

iCan is a bespoke Careers Event which aims to give young people with SEND the opportunity to gain a greater and more informed understanding of their future careers, education and training pathways.

For the first time, iCan will be hosting an evening event to ensure parents and carers of young people with SEND are able to access this information with their young people.

This year's evening event will take place on Tuesday 28 November 2023 4.30pm - 7pm at the King's Centre, Eastbourne. Households will receive a postcard in the coming weeks.

Year 10 students will have the opportunity to visit the I-Can Careers Fair during school time in the Spring term. Further details to follow. If you would like further information on the fair, please visit [careers East Sussex](#).



GILDREDGE HOUSE



@GILDREDGEHOUSE
FREESCHOOL



WWW.GILDREDGEHOUSE.ORG.UK

