



ASPIRE

Gildredge House

WEEKLY NEWS

WEEK 6 | TERM 6 | 14 JULY 2023



ASPIRE IN ALL THAT WE DO

KEY REMINDERS

Key reminders for the last day of term leaving arrangements:

Wednesday 19th July: Leaving Arrangements

Primary

- Reception- Year 5: 12.15 pm from the MUGA
- Year 6: 12.25 pm from the Plaza

Secondary

- Years 9 and 10: 12.30 pm
- Years 7 and 8: 12.35 pm

Sixth Form

- Year 12: 11.20 am



Key Dates

17TH JULY
END OF YEAR SCHOOL TRIP
YEAR 7
YEAR 9

18TH JULY
END OF YEAR SCHOOL TRIP
YEAR 8
YEAR 10

19TH JULY
LAST DAY OF TERM
EARLY FINISH
WHOLE SCHOOL

NUT FREE SCHOOL - To safeguard our students, staff and visitors it is imperative that peanuts, nuts and anything nut based are NOT bought into school or consumed on the premises.

ASPIRE Points Totals



BADER

17623



CARTER

19751



HOPKINS

19848



JOHNSTON

19598



RAVILIOUS

20982



GILDREDGE HOUSE



@GILDREDGEHOUSE
FREESCHOOL



WWW.GILDREDGEHOUSE.ORG.UK

Gildredge House Radio Station Competition

ON AIR

WINNER



Radio Station Name..... **Aspire Radio**

We are thrilled to share the fantastic news of the winners of the Gildredge House Radio competition. It is with great pleasure that we announce the names of our champions, Finley and Annika, who both suggested the name "Aspire Radio".

We received numerous entries and suggestions, and it was a challenging task to select the best one. However, after careful consideration and evaluation, Mr Bull unanimously decided that "Aspire" was the perfect name for our radio station as it encapsulated all of our school's values.

We would also like to take this opportunity to express our immense pride and appreciation for the outstanding level of innovative ideas and creativity showcased by all the pupils at Gildredge House who participated in the competition.

Congratulations to all the participants for their exceptional efforts!

With much excitement, we officially declare "Aspire" as the official name of our radio station, and it will be featured in our upcoming radio jingle. We can't wait to share our new jingle with everyone and give a shoutout to our winners for their exceptional contribution.

Thank you to everyone who participated and made this competition a huge success. We can't wait to share more details about Aspire Radio and how students can get involved, come September.

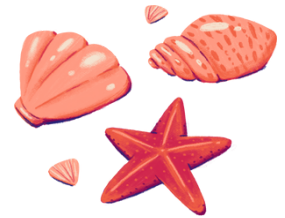
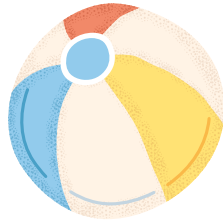


Primary

Trip to the Beach



Last Thursday, Year 2 had the best time at the beach! The week before we went, we all tie-dyed, stitched, glued and drew our own beach flags to take with us. Once we got to the beach, we made stone sculptures using the different resources we found and completed a scavenger hunt. We finished our trip with a beach clean. Thank you to all our parent helpers for their support. Miss Carter and Miss Farrar.



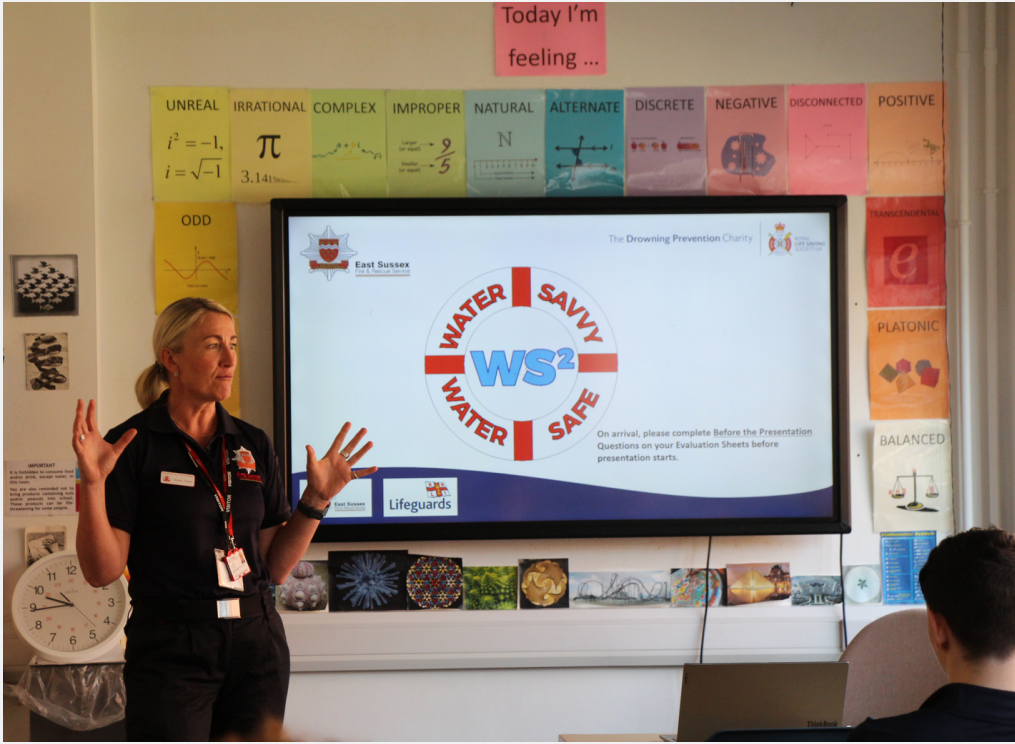
FIRST ANNUAL SPELLING BEE!



Well done to all of primary for participating in the First Annual Spelling Bee! Miss Swain is so proud of all participants, especially those who made it to the final rounds. We have some incredible spellers in Primary, and it was fantastic to see children succeed and feel proud.



Water Savvy Water Safe WS2



We were delighted to welcome Susan Taylor from East Sussex Fire & Rescue to our school as they have developed an education programme **Water Savvy Water Safe WS2**. This has been developed by a collaborative working group between East Sussex Fire and Rescue Service (ESFRS), Royal Life Saving Society (RLSS), and Royal National Lifeboat Institution (RNLI) it is aimed specifically at year 11 & 12 students.

As young people become more independent, we must ensure that they are adequately prepared for the types of scenarios that often lead to drowning. Nearly 44% of people who drowned in 2019 had no intention of entering the water, so when the worst does happen they are ill-prepared for it.

Equipping children and teenagers with the knowledge, skills and experience in water safety will contribute hugely to their long-term safety around water.

The nature of what the students saw and heard in the presentation was 'hard-hitting' as it exposes them to the possible consequences of drowning. The fundamental aim was not to shock or sensationalise but to bring home to our students the gravity of the matter. The message is **'Be Water Aware'**.

Water is a great medium for leisure and sporting activities and we want students to enjoy being beside, on and in the water safely.





East Sussex
Fire & Rescue Service



Always
Follow the



ROYAL
LIFE SAVING
SOCIETY UK

SAFE Code

Spot

Spot the Dangers

Look for dangers whenever you're near water

Advice

Take Advice

Read the signs
Ask lifeguards and adults

Friend

Go with a Friend

Always go with friends or family, it's more fun, and they can help in an emergency

Emergency

Know what to do in an emergency

call 999 and shout for help
Never go in to the water to help someone

For more information on how to stay **SAFE** visit

www.esfrs.org

Summer WATER SAFETY

Help to spread the summer water safety message!

Drowning accidents are especially high in the summer months and over the last few years there have been too many tragedies that could have been prevented.

Every year people drown both at home and on holiday because they don't take simple

precautions, so understanding how to enjoy the water safely is vital.

Please help to avoid another tragic summer this year by spreading the following water safety advice:



LOOK OUT FOR LIFEGUARDS

If you're looking for a place to cool off, always find a lifeguarded swimming site



IT'S COLDER THAN IT LOOKS

Water at open and inland sites is often much colder than it looks, cold water can affect your ability to swim and self-rescue



DON'T GO TOO FAR

Always swim parallel to the shore, that way you're never too far away from it



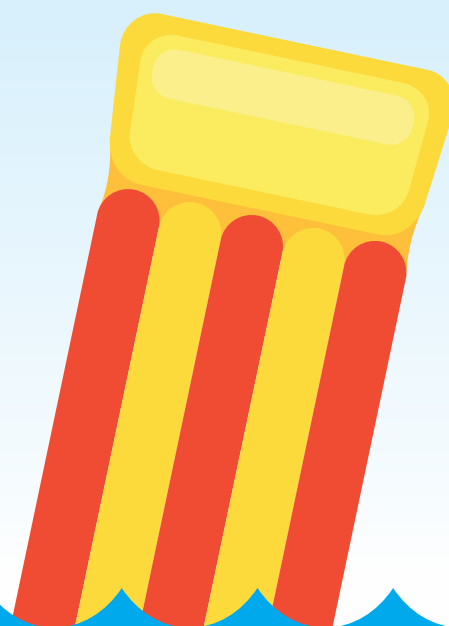
IT'S STRONGER THAN IT LOOKS

Currents in the water can be very strong. If you find yourself caught in a current – don't swim against it. Stay calm, float on your back, call for help and swim out of the side of the current when it is safe



BRING A FRIEND

Always bring a friend when you go swimming so if anything goes wrong, you've got someone there to help





Thank you!

The Friends of Gildredge House would like to extend a HUGE thank you to our amazing school community. Thanks to your generosity we have raised an incredible **£13,208** in the last year. We have been able to fund building blocks, primary books, outdoor play equipment, chess boards, secondary movie night, a noticeboard, inflatables day for the Coronation and end of year celebrations to name a few! We couldn't do this without you.

Thank you to everyone who visited us at the summer fayre last weekend, this event alone took **£3,009** on the day. We would like to thank all the amazing volunteers for donating their time and J Heath & Son Butchers for donating the delicious burgers and sausages for the BBQ. Thank you to everyone who donated a prize or gift for the tombolas.

The raffle was a huge success and we are always bowled over by the support we receive from local businesses.

Special mention and thanks to these businesses in donating gifts for the summer raffle;

The Lansdowne Hotel, Royal Eastbourne Golf Club, Urban Jump, Flowers of Eastbourne, Sovereign Centre, Royal Hippodrome Theatre, EMSR, Nuts Hair, J Heath, Long Man Brewery, and Fresh Wipes.

We are excited to start planning more fundraising events for the coming school year and as always we would love to hear your ideas and suggestions.

Drop us a line at fogh@gildredgehouse.org.uk

Wishing all the Gildredge House families a wonderful summer break!

SUMMER FAYRE



GILDREDGE HOUSE



@GILDREDGEHOUSE
FREESCHOOL



WWW.GILDREDGEHOUSE.ORG.UK

END OF YEAR ATTENDANCE



At Gildredge House, we believe that outstanding attendance is important to ensure children are safe and have full access to the educational provision made for them.

We closely monitor attendance for all students in both Primary and Secondary. We celebrate, weekly, the top two classes with the highest attendance rates in both phases of the school.

Thank you to all parents/carers who continue to support our strive for excellent attendance at Gildredge House. We are delighted to announce that the classes below have achieved top class attendance for the current academic year.

Previously, we have celebrated all students who have achieved 100% attendance, however in line with our attendance policy and our current attendance expectations of 96%, we will be celebrating all students who have achieved above 96% attendance this year.

These students will be celebrated in their end of year assemblies next week and achievements will be communicated home. Our Attendance and punctuality procedures have been recently reviewed and our updated policy will be shared with parents for the start of the new academic year in September 2023.

Congratulations to:

Primary

4B = 96.5%
3B = 95.8%

Secondary

7J = 95.6%
8C = 95.2%



MENU

WEEKLY MENU				
Gildredge House School Summer Menu 2023 - Week 1				
Monday	Tuesday	Wednesday	Thursday	Friday
Pork Chilli Con Carne Dog topped with Grated Cheese & Crispy Onions	Chicken Forestiere - Strips of Chicken in a Mushroom Tomato Herb Sauce	Honey Baked Gammon with Roast Gravy	Creamy Coconut Chicken Korma Curry	Battered Fish of the Day
Vegetable Chilli Con Carne	Pea & Leek Pasta Bake	BBQ Vegetable & Butternut Squash Meatloaf	Butternut Squash & Chickpea Curry	Vegetable Bean Burger
Potato Wedges	Fusilli Pasta	Roast Potatoes	Braised Rice	Chipped Potatoes
Side Salad	Garlic Bread Slice	Glazed Carrots & Broccoli	Naan Bread	Baked Beans or Peas
Fusilli Pasta with Tomato Basil Sauce	Jacket Potato with Baked Beans	Fusilli Pasta with Slightly Spiced Tomato Sauce	Jacket Potato served with Grated Cheese	Fusilli Pasta with Pesto Basil Oil
Apricot Flapjack	Toffee Apple Pie with Custard	Chocolate Tiffin Slice	Drizzled Carrot Cake	Forest Berry Yoghurt



GILDREDGE HOUSE



@GILDREDGEHOUSE
FREESCHOOL



WWW.GILDREDGEHOUSE.ORG.UK

